

Nelway American bullfrog management project



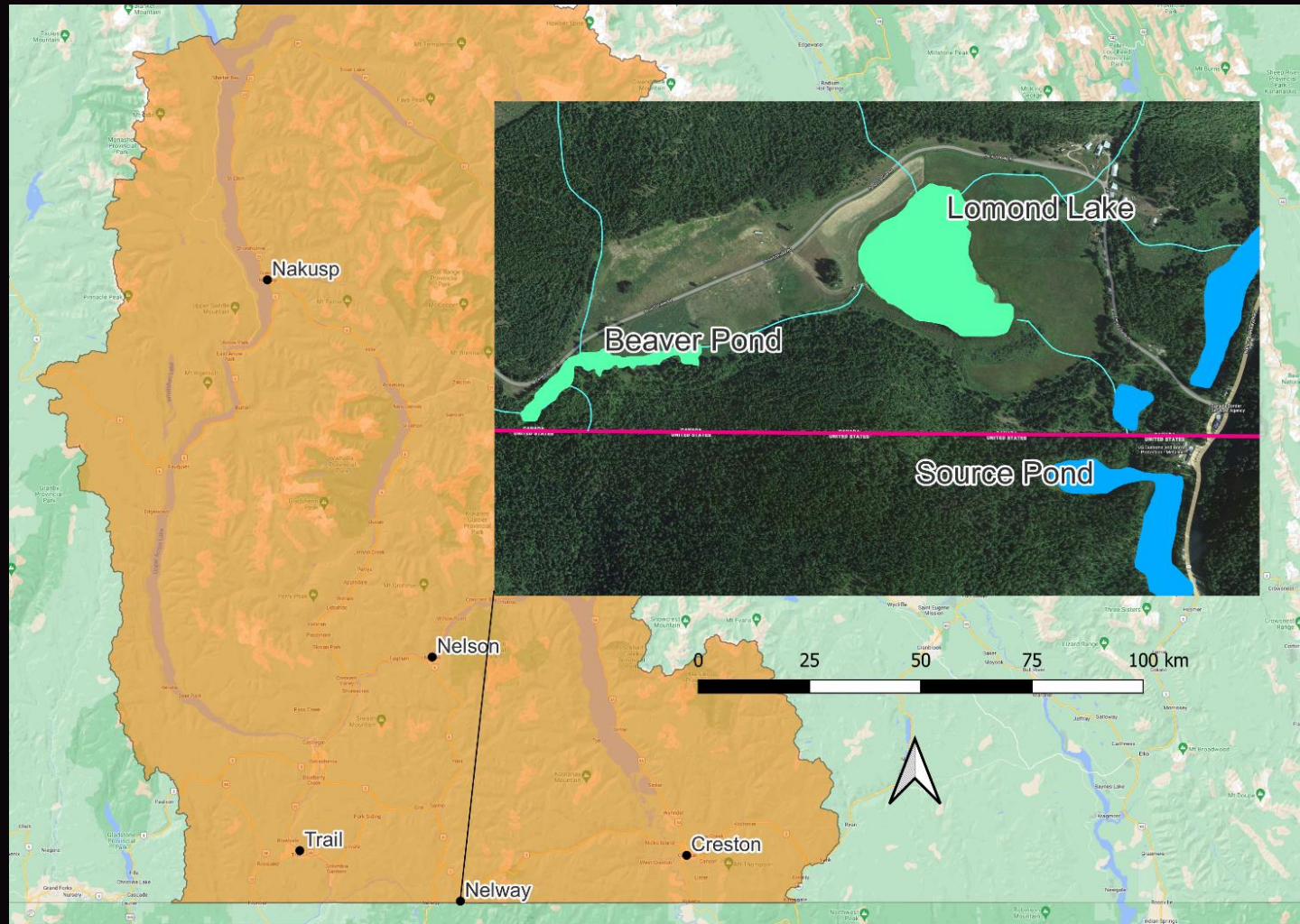
Thank you to our funder...



Way' - Hello



Nelway study area



- = High priority
- = New priority
- = Canada - U.S. Border

Map 1. Inset map of the Nelway American bullfrog management projects' study area, 2022.

Lomond Lake



- Open water and cattail marsh
- Canoe or kayak
- Electro-frogger

Beaver Pond



- Swampy
- Wader territory
- Hand capture and dip net

Electro-frogger



Hand capture or dip net



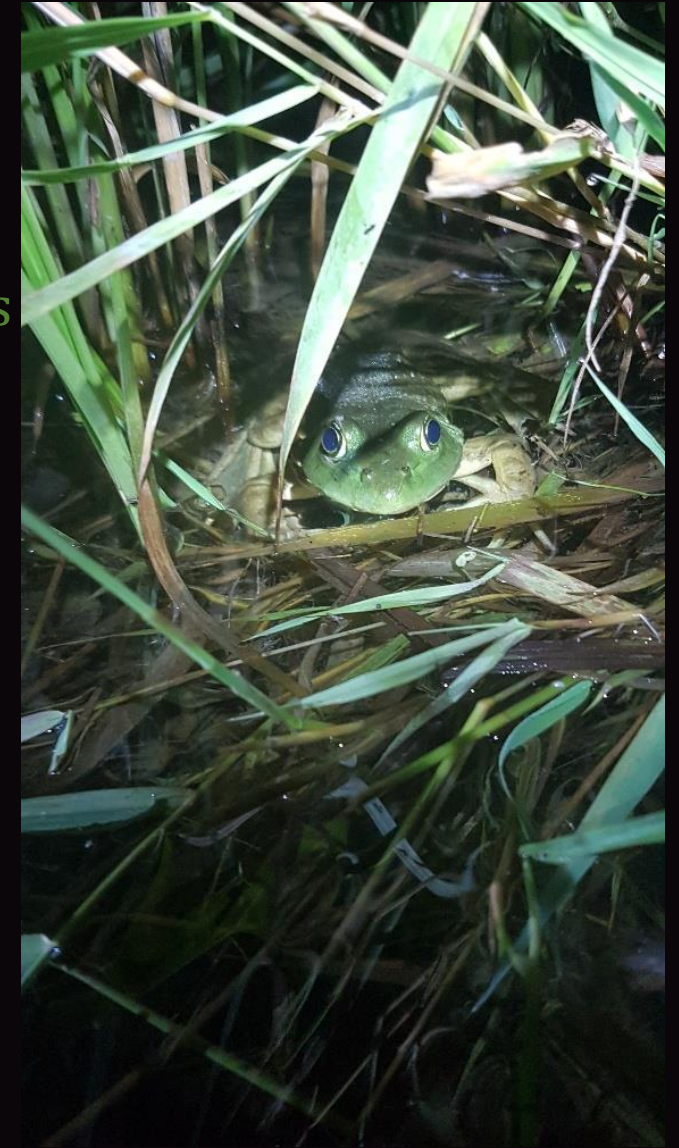
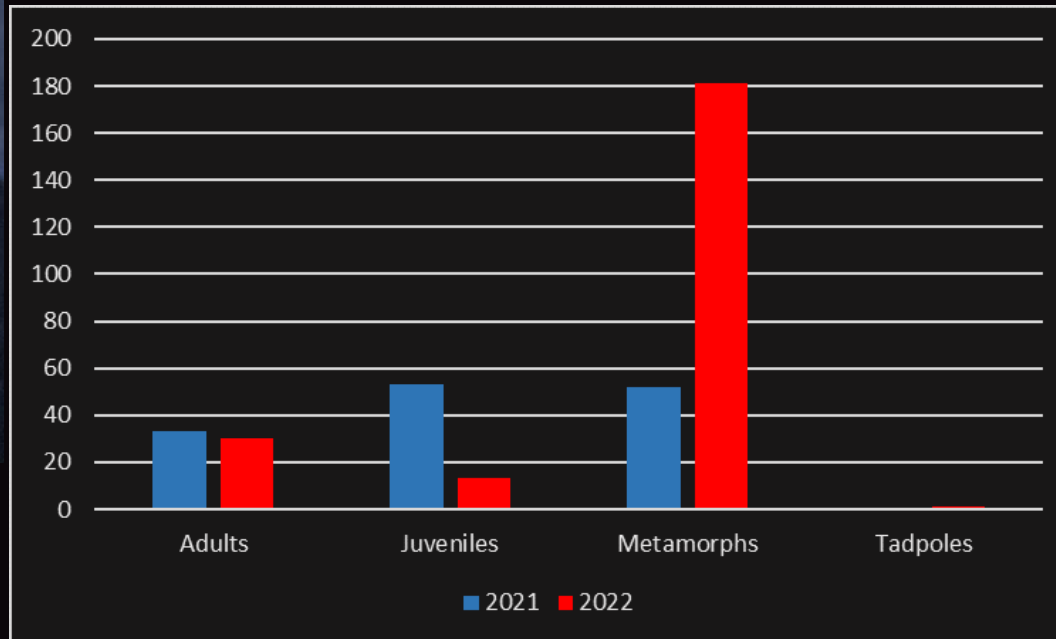
What ELSE are we looking for?

- Behavior
- Native herpetofauna
- Predation
- Anything interesting

Trend tracking

Why tho?

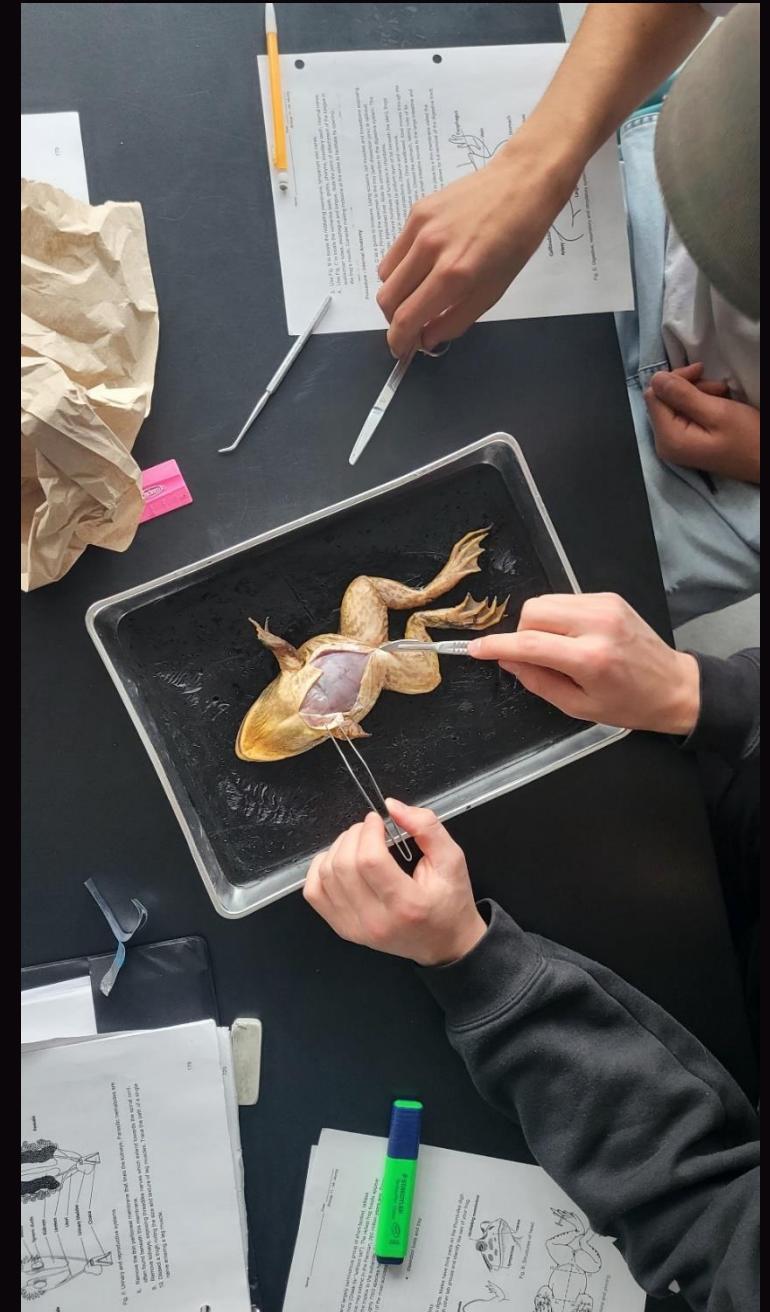
- Biodiversity index indicates that biodiversity is in decline.
- Awareness of behaviour patterns helps us to pinpoint more bullfrogs.
- 225 captured in 2022, by ONA
- 138 captured in 2021



Dissections



- Partnered with Nelson's LVR Secondary
- “Thank you so much that was the coolest thing we’ve ever done in science class!”
-LVR student, on thankyou note



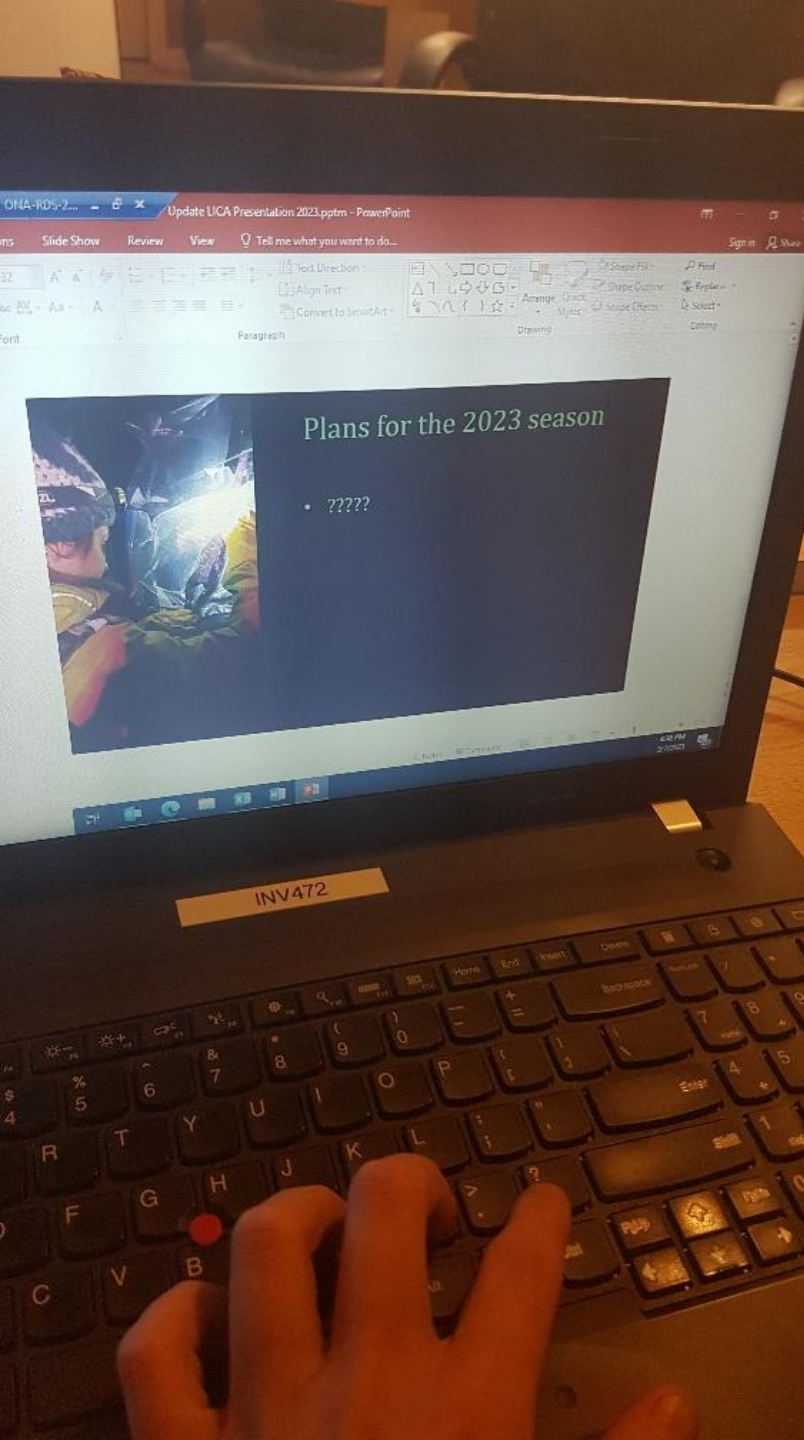
Stomach analysis



- Bullfrog metamorphs
 - Giant water beetles
 - Bullfrog tadpoles
- And one juvenile Columbia spotted frog,
one mouse, one bird, lots of insects.

"I hope you find the other half of the tadpole.
Thanks!"

-LVR student, on thank you note



Plans for the 2023 season

- Increase effort on egg masses.
- Expand partnerships, including to target the Source Pond.
- Continue monitoring and eradication.



limləmt | Thank You

